

Chateau Montbrun

A historical monument in France

For Sale!





Chateau Montbrun was built in 1179 and is one out of only four castles from that époque in France with a special history related to the Crusades and King Richard the Lionhearted from England.

It is situated in the middle of France in the Limousin region called Haute-Vienne; 350 km south of Paris and 43 km from the Porcelain City of Limoges with an international airport available.

The estate contains 165 hectares of land with several houses, barns and a tavern on the property; furthermore it has four lakes, a river and various water wells.

The castle itself has been completely renovated into the highest standard of modern way living without damaging the authenticity of its history;

It has satellite services, a central floor heating system and electricity, computer facilities, a modern kitchen brought into a rustique style, and most of the rooms have their own hot shower-rooms.

The living space contains a great hall, a house chapel, office-rooms, a music-room, a master bedroom, 15 guestrooms, a dining room, a living salon, a cinema room, a library, a billiard room, a congress room, an office room, a Jacuzzi, a sauna, servant rooms; all in a total of approximately 3500 square meters.



The Area

Dournazac is a village in the south of the Haute Vienne, almost on the border with the Dordogne, and in the heart of the "Parc Naturel Regional Perigord-Limousin". This is an area of outstanding natural beauty - hills, trees, lakes and the world famous Limousin cattle. It is also an area of chateaux and historic villages and towns.

Within 8kms of Dournazac are three remarkable castles.

The Chateau de Montbrun is one of the most photographed castles in France, Chateau de Brie has a collection of animated toys and dolls and Chateau Chabrol at Chalus is famous for being the place where Richard the Lionhearted received his fatal crossbow wound.

The area is a growing tourist destination with a large range of activities such as walking, cycling and swimming at leisure lakes with beaches.

Dournazac is an easy 40 minute drive from Limoges international airport which has regular flights to many national and international cities.

The Village of Dournazac

The village has all the basic facilities including mini supermarket, garage, post office, doctor and pharmacy, bar, hairdresser, boulangerie, junior school and mairie - all within a few minutes' walking distance from the house.

During the last weekend in October there is the annual Chestnut Festival which attracts over 10000 visitors.

The town of Chalus, about 6-7 minutes away by car, has larger facilities such as banks, dentists, vet, tourist information office etc. It also has a weekly traditional French market.



Image © 2009 IGN-France

Do

DESIGNATION château DE MONTBRUN
DOURNAZAC (HAUTE-VIENNE) 87230

Figurant au cadastre savoir :

Préfixe	Section	N°	Lieudit	Surface	Nature
	A	143	La Bussiere Montbrun	00 ha 70 a 75 ca	Pré
	A	144	La Bussiere Montbrun	00 ha 18 a 80 ca	Futaie
	A	145	Le Petit Bord	01 ha 80 a 95 ca	Lande
	A	146	Le Petit Bord	03 ha 12 a 10 ca	Bois Eaux
	A	147	Le Petit Bord	00 ha 17 a 05 ca	Eaux Bois
	A	148	Le Petit Bord	01 ha 77 a 40 ca	Futaie Terre
	A	149	Le Petit Bord	00 ha 19 a 35 ca	Pacage Eaux
	A	150	Le Petit Bord	01 ha 23 a 95 ca	Terre
	A	151	Le Petit Bord	00 ha 60 a 25 ca	Eaux
	A	152	Le Petit Bord	01 ha 42 a 75 ca	Pacage Eaux
	A	153	Le Petit Bord	01 ha 31 a 40 ca	Pré Futaie
	A	154	Le Petit Bord	00 ha 39 a 00 ca	Pré Futaie
	A	155	Le Petit Bord	00 ha 39 a 05 ca	Futaie
	A	156	19 rte du Petit Bord	01 ha 31 a 80 ca	Pré
	A	157	Le Petit Bord	00 ha 09 a 95 ca	Pré
	A	158	Le Petit Bord	00 ha 09 a 50 ca	Jardin
	A	159	Le Petit Bord	00 ha 09 a 50 ca	Pré
	A	160	34 rte Le Petit Bord	00 ha 10 a 50 ca	Sol
	A	161	32 rte Le Petit Bord	01 ha 31 a 30 ca	Pré
	A	164	Pieu de Got	02 ha 74 a 05 ca	Futaie
	A	165	Pieu de Got	00 ha 04 a 20 ca	Futaie
	A	172	Pieu de Got	00 ha 19 a 30 ca	Taillis
	A	173	Pieu de Got	00 ha 66 a 15 ca	Terre
	A	174	Pieu de Got	00 ha 08 a 90 ca	Terre
	A	176	Pieu de Got	00 ha 21 a 25 ca	Bois
	A	182	Pieu de Got	00 ha 16 a 68 ca	Bois
	A	185	Pieu de Got	00 ha 16 a 55 ca	Terre
	A	215	Bord	00 ha 16 a 45 ca	Terre
	A	219	Bord	00 ha 34 a 45 ca	Pré
	A	220	Bord	00 ha 03 a 50 ca	Pré
	A	224	24 rte du Petit Bord	00 ha 20 a 25 ca	Pré
	A	225	26 rte du Petit Bord	00 ha 15 a 85 ca	Pré
	A	226	28 rte du Petit Bord	00 ha 14 a 70 ca	Pré
	A	227	30 rte du Petit Bord	00 ha 08 a 90 ca	Pré
	A	228	17 rte du Petit Bord	00 ha 30 a 65 ca	Pré
	A	402	Le Puy Aubert	00 ha 04 a 95 ca	Taillis



A	815	Le Grand Moreux	00 ha 43 a 25 ca	Pacage
A	816	Les Planyeux	01 ha 62 a 20 ca	Lande
A	818	Les Planyeux	00 ha 38 a 30 ca	Futaie
A	819	Les Planyeux	00 ha 35 a 95 ca	Pré
A	824	Les Planyeux	00 ha 55 a 10 ca	Taillis
A	851	Marnaud	00 ha 36 a 00 ca	Taillis
A	856	Marnaud	00 ha 15 a 35 ca	Terre
A	1436	Le petit Bord	00 ha 05 a 75 ca	Taillis
A	1548	Pieu de Got	01 ha 28 a 88 ca	Terre
A	1549	Pieu de Got	00 ha 16 a 42 ca	Terre
A	1575	Pieu de Got	06 ha 13 a 87 ca	Pré
A	1608	Pieu de Got	00 ha 44 a 18 ca	Futaie
B	380	de la Perdrix	02 ha 64 a 40 ca	Futaie Terre
B	381	de la Perdrix	03 ha 90 a 60 ca	Futaie Pré
B	658	Le Petit Puyconieux	00 ha 80 a 20 ca	Taillis
B	760	La Gaudonie	00 ha 11 a 10 ca	Futaie
B	777	La Gaudonie	00 ha 75 a 50 ca	Taillis
B	778	Monbrun	01 ha 61 a 00 ca	Terre
B	779	Monbrun	00 ha 08 a 80 ca	Pacage
B	780	Monbrun	01 ha 45 a 50 ca	Pré
B	781	Monbrun	00 ha 10 a 40 ca	Eaux
B	782	Monbrun	00 ha 13 a 55 ca	Pré
B	783	2 rte du Château	00 ha 08 a 85 ca	Sol
B	784	3 rte du Château	00 ha 38 a 56 ca	Jardin
B	785	Monbrun	00 ha 11 a 20 ca	Futaie
B	786	1 rte du Château	01 ha 62 a 45 ca	Pré
B	787	Monbrun	00 ha 11 a 30 ca	Pré
B	788	Monbrun	00 ha 40 a 20 ca	Pré
B	789	7 rte du Château	00 ha 10 a 94 ca	Sol
B	790	Monbrun	00 ha 05 a 75 ca	Jardin
B	791	Monbrun	00 ha 02 a 80 ca	Pré
B	792	Monbrun	00 ha 15 a 40 ca	Taillis
B	793	Monbrun	00 ha 89 a 10 ca	Futaie
B	794	Monbrun	00 ha 41 a 90 ca	Futaie
B	795	Monbrun	00 ha 22 a 20 ca	Taillis
B	796	Monbrun	00 ha 63 a 35 ca	Eaux
B	798	6 rte du Château	00 ha 14 a 15 ca	Sol
B	799	Monbrun	00 ha 15 a 35 ca	Pré
B	800	Monbrun	00 ha 10 a 75 ca	Pré
B	801	Monbrun	00 ha 32 a 65 ca	Pré
B	802	4 rte du Château	00 ha 03 a 20 ca	Sol
B	803	Monbrun	00 ha 05 a 00 ca	Jardin
B	804	Monbrun	00 ha 25 a 70 ca	Taillis
B	805	Monbrun	01 ha 01 a 20 ca	Terre
B	806	Monbrun	00 ha 28 a 30 ca	Taillis
B	807	Monbrun	00 ha 98 a 50 ca	Futaie



	B	822	Le Chedal	00 ha 71 a 75 ca	Taillis
	B	823	Le Chedal	00 ha 71 a 20 ca	Taillis Sol
	B	824	10 rte du Château	00 ha 05 a 35 ca	Jardin
	B	825	12 rte du Château	00 ha 12 a 45 ca	Sol
	B	826	Le Chedal	00 ha 08 a 20 ca	Jardin
	B	827	Le Chedal	01 ha 09 a 40 ca	Eaux Pacage
	B	828	Le Chedal	00 ha 71 a 00 ca	Pré
	B	829	Le Chedal	03 ha 79 a 60 ca	Eaux Terre
	B	830	Le Chedal	03 ha 27 a 50 ca	Futaie
	B	831	Le Chedal	01 ha 53 a 45 ca	Taillis
	B	834	Le Chedal	00 ha 01 a 60 ca	Pré
	B	835	Le Chedal	01 ha 39 a 30 ca	Terre
	B	1704	La Gaudonie	04 ha 22 a 35 ca	Terre Pré
	B	1707	La Gaudonie	00 ha 49 a 50 ca	Pré
	B	1933	Monbrun	00 ha 21 a 89 ca	Ter. agrément
	B	1935	Le Chedal	00 ha 02 a 91 ca	Pré
	B	1936	Le Chedal	03 ha 23 a 89 ca	Pré
	B	1938	Le Chedal	02 ha 03 a 36 ca	Futaie
	B	1939	Le Chedal	00 ha 00 a 67 ca	Lande
	B	1940	Le Chedal	00 ha 01 a 16 ca	Pré
	B	1941	Le Chedal	00 ha 07 a 70 ca	Lande
	F	92	Pieturaud	00 ha 11 a 28 ca	Bois
	F	98	Pieturaud	00 ha 27 a 69 ca	Taillis
	F	106	Du Got	00 ha 99 a 85 ca	Pré
	F	111	Du Got	00 ha 27 a 50 ca	Taillis
	F	114	Du Got	00 ha 12 a 32 ca	Bois
	F	150	Du Ruisseau	00 ha 09 a 69 ca	Terre
	F	163	Du Ruisseau	00 ha 18 a 57 ca	Terre
	F	167	Du Ruisseau	00 ha 24 a 80 ca	Terre
	F	170	Du Ruisseau	00 ha 24 a 25 ca	Terre
	F	171	Du Ruisseau	00 ha 33 a 10 ca	Terre
	F	172	Du Ruisseau	00 ha 36 a 41 ca	Terre
	F	173	Du Ruisseau	00 ha 19 a 92 ca	Terre
	F	174	Du Ruisseau	00 ha 25 a 33 ca	Terre
	F	177	De La Roche	07 ha 03 a 85 ca	Futaie
	F	178	De La Levee	00 ha 17 a 66 ca	Terre
	F	179	De La Levee	00 ha 54 a 95 ca	Taillis
	F	180	De La Levee	00 ha 62 a 47 ca	Pacage
	F	181	De La Levee	01 ha 34 a 76 ca	Taillis
	F	182	De La Levee	00 ha 16 a 20 ca	Futaie
	F	196	De La Levee	00 ha 08 a 81 ca	Terre
	F	211	De La Levee	00 ha 68 a 16 ca	Terre
	F	240	Lamonnerie	00 ha 06 a 55 ca	Taillis
	F	246	Lamonnerie	00 ha 02 a 35 ca	Bois
	F	294	Peneloux	00 ha 62 a 70 ca	Terre
	F	299	Peneloux	00 ha 56 a 47 ca	Terre



	F	356	Les Barreras	00 ha 60 a 40 ca	Futaie
	F	357	Les Barreras	03 ha 40 a 88 ca	Futaie
	F	358	Les Barreras	02 ha 31 a 79 ca	Pré
	F	360	Las Brivas	07 ha 53 a 40 ca	Futaie Pré
	F	361	Las Brivas	02 ha 37 a 95 ca	Pré Terre
	F	362	Las Brivas	00 ha 13 a 50 ca	Pré
	F	369	Las Brivas	00 ha 94 a 85 ca	Futaie Pré
	F	370	Las Brivas	06 ha 74 a 30 ca	Futaie Taillis
	F	371	Las Brivas	00 ha 34 a 15 ca	Futaie
	F	372	Las Brivas	01 ha 69 a 05 ca	Futaie Pré
	F	515	Du Barret	00 ha 56 a 25 ca	Pré
	F	522	Du Barret	00 ha 39 a 08 ca	Terre
	F	523	Du Barret	00 ha 14 a 60 ca	Terre
	F	524	Du Barret	00 ha 48 a 50 ca	Bois
	F	568	Trainie	00 ha 04 a 55 ca	Pacage
	F	569	Trainie	00 ha 05 a 75 ca	Bois
	F	595	De La Catou	00 ha 33 a 05 ca	Taillis
	F	627	De La Catou	00 ha 27 a 50 ca	Bois
	F	871	Clos D'en Bas	00 ha 05 a 75 ca	Terre
	F	893	Clos D'en Bas	00 ha 15 a 90 ca	Pré
	F	894	Clos D'en Bas	00 ha 06 a 35 ca	Terre
	F	896	Clos D'en Bas	00 ha 07 a 60 ca	Terre
	F	897	Clos D'en Bas	00 ha 42 a 85 ca	Pré
	F	898	Clos D'en Bas	01 ha 56 a 00 ca	Pré
	F	899	Clos D'en Bas	00 ha 08 a 10 ca	Terre
	F	914	Clos D'en Bas	00 ha 43 a 42 ca	Terre
	F	937	Puygrele	00 ha 70 a 85 ca	Pré
	F	1619	Las Brivas	00 ha 79 a 50 ca	Futaie
	F	1620	Les Barreras	00 ha 03 a 25 ca	Taillis
	F	1623	De La Catou	00 ha 00 a 65 ca	Lande
	F	1629	Las Brivas	07 ha 14 a 00 ca	Pré
	F	1632	Las Brivas	00 ha 21 a 33 ca	Pré

Total surface : **165 ha 54 a 38 ca**



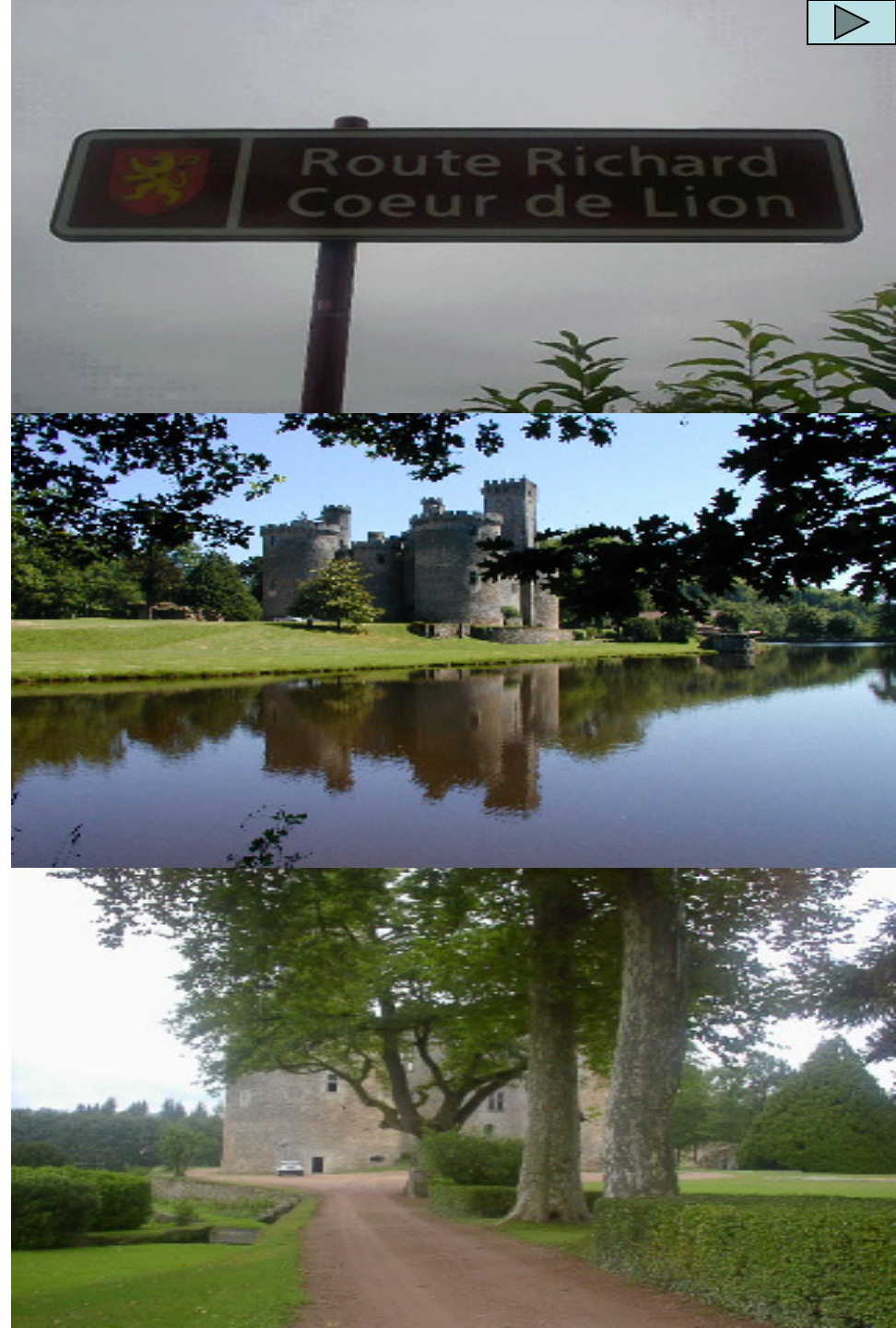
The domain of the castle consists of app. 165 hectares surrounding the castle; which lies within a mile from the nearest village Dournazac, from where there are two roads approaching the castle and entering the village of Montbrun (which is part of the domain).

From there the road bends around the lake showing the splendor of the castle, splitting into two roads going up. Just at the intersection there are three houses. Going right it passes two lakes. On the left covered behind the woods. Going left the lakes are visible on the right. Uphill there is a farm property, also belonging to the estate.

The estate is part of a tourist route called :
“Route Richard Coeur de Lion”.

There are many historical facts, legends and events linked to the Castle among which the claim that Richard I (the Lionhearted), 12 days after being wounded, during his siege of the nearby Castle of Chalus, died at Montbrun.

Further back in history, in the Celtic and Roman period, there were secret tunnels and hiding places built under the ground, which makes the local people speculate on many stories what could have happened in the past.



Département de la Haute Vienne
Domaine de MONTBRUN



0 10 20 30 40 50 60 70 80 90 100



1. Prieuré, ancienne école de la paroisse, chapelle
2. Maison Saint-Etienne, La Prie
3. Prieuré de Saint-Etienne
4. Ancienne ferme, puis habitation
5. Vieux oratoire
6. Tour de l'ancien manoir
7. Grand labyrinthe de la Prie
8. Terrain de manoir
9. Tour de l'ancien manoir
10. Cour de l'ancien manoir
11. Terrain de manoir
12. Terrain de manoir
13. Terrain de manoir
14. Terrain de manoir
15. Terrain de manoir
16. Terrain de manoir
17. Terrain de manoir
18. Terrain de manoir
19. Terrain de manoir
20. Terrain de manoir
21. Terrain de manoir
22. Terrain de manoir

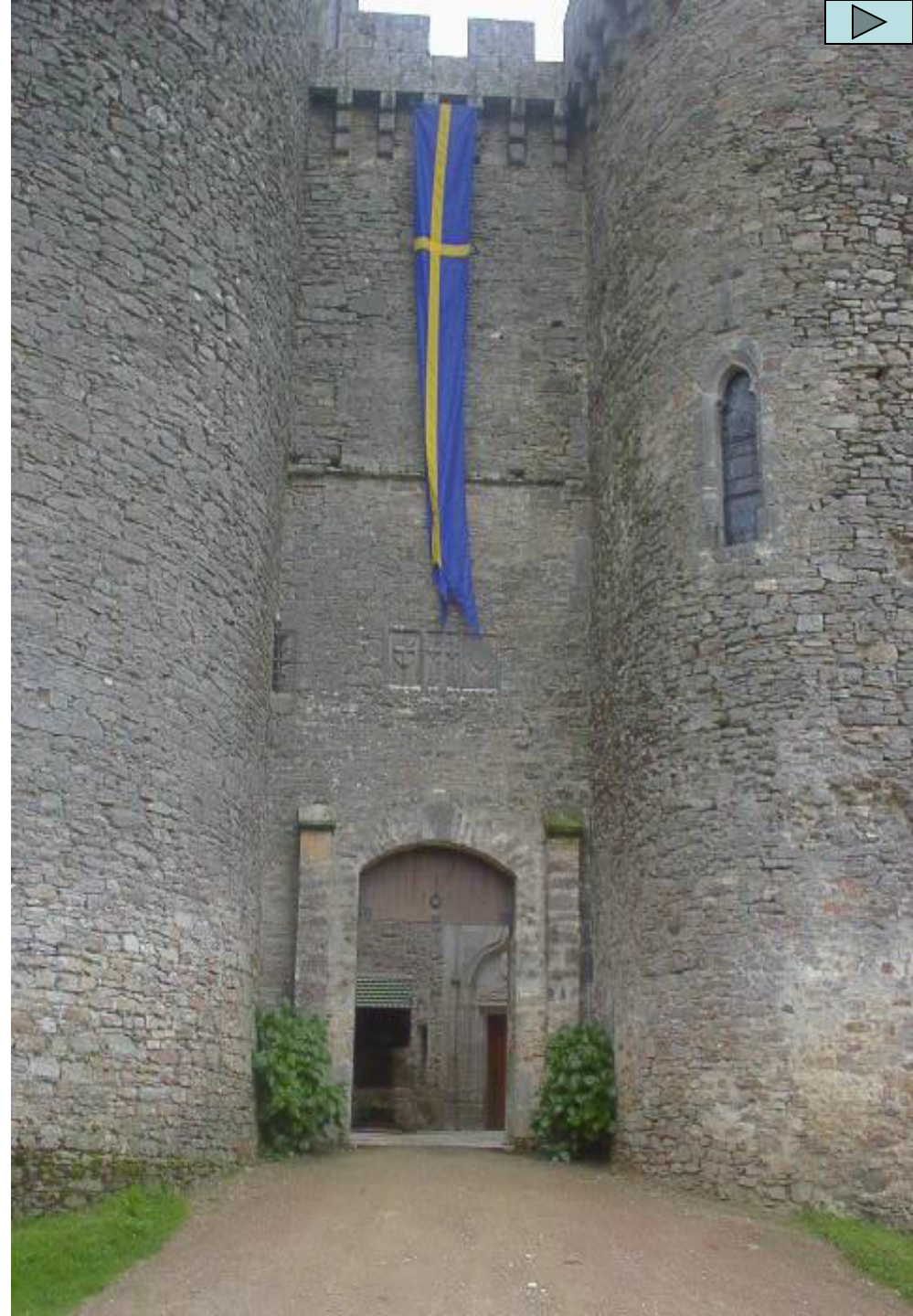


The castle is surrounded by a small park, which is surrounded by a moat; within the park four stone walls and towers protect the inside of the castle.

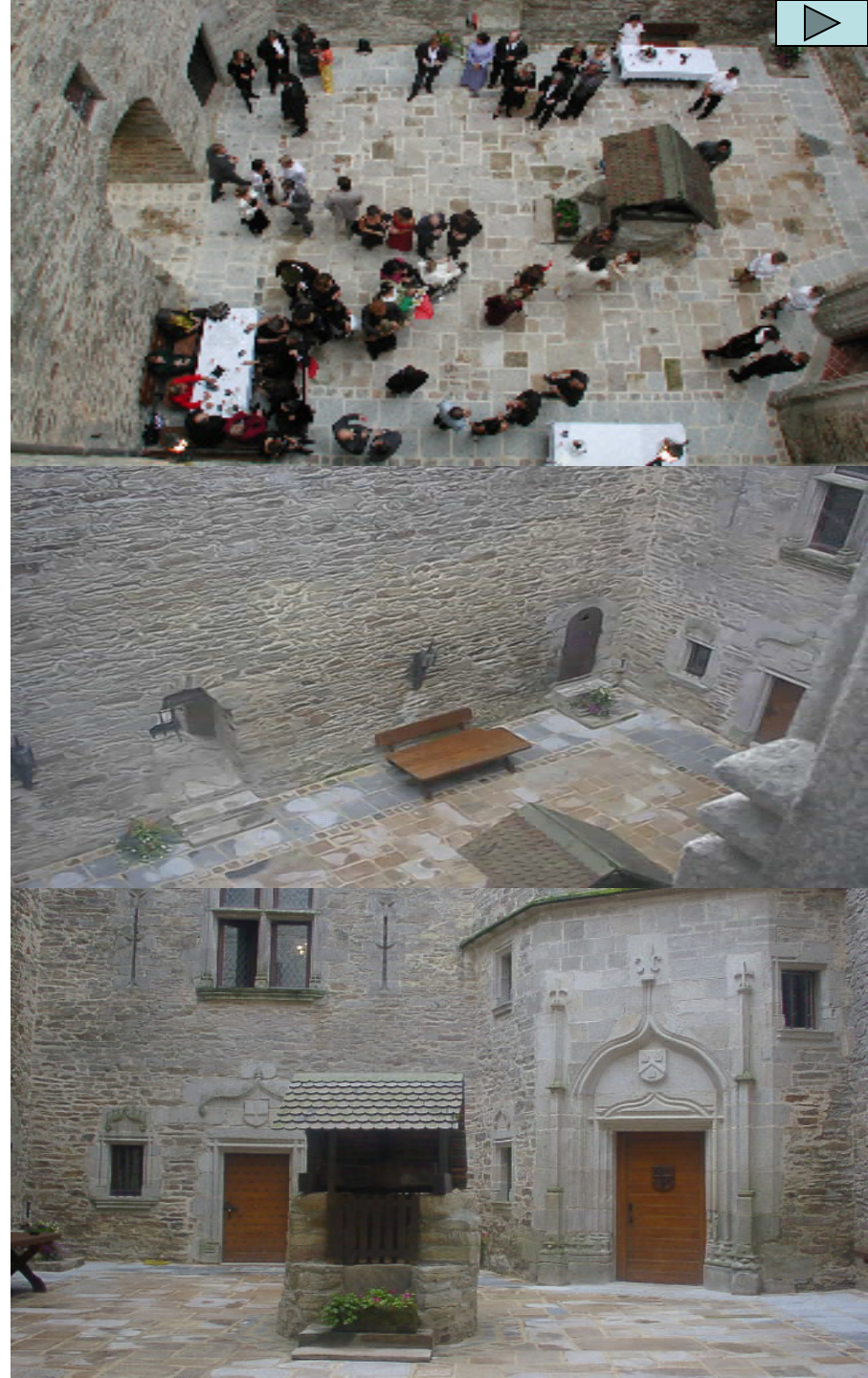
The four towers are named: the North-East, the North-West, the South-East and the South-West. The North-East is connected with a wall to the South-East. Between the South-East and the South-West there is a huge living space including the kitchen.

The South-West tower contains the so called 'Grand Jacques', which is the square tower pointing high up. Between the South-West and the North-West there are many living spaces as well.

There are a few positions to enter the castle. Entering through the front gate, opposite of the tavern, you will arrive at the informal entrances of the castle; when you walk/drive 180 degrees around the castle you will enter through the main gate (see photo on the right).



The courtyard is surrounded by four walls, with on each end a tower. Entering the courtyard, on the right side there is the first tower with a small entrance to what is called the 'oubliette', a place where prisoners in ancient times were kept. On the left side there is the second tower, which brings us to a conference room with a notable round table and three big guestrooms all equipped with bathrooms. Going straight, entering through the right door in front you will find the so called living room. The left door in front brings us to the office space.



There is a great hall, which can be used for many occasions. It can, for example, serve app. 100 persons for a gala-dinner or as many as 200 as an audience for recitals or house concerts. Next to the great hall there is a dining room, which designed to serve 26 persons for dinner and is suited with a by-kitchen (connected to the main kitchen by elevator and staircase downstairs) next to it facilitate the personnel to serve and to clear the table.





The castle contains office areas. On the ground floor of the North-East tower there is a round conference table all equipped for digital presentations.

There are two other offices; one in the South-East section, which is a representing office, and one on the first floor in the North-West tower.

Above the representing office there is a comprehensive library.



The kitchen is fully modern equipped with a potential to serve more than a hundred people. It has been designed into a cozy atmosphere so it can serve for an intimate family dinner too. It has a cool-room (with a refrigerator as well as a freezer section) to preserve large quantities of food. Also there is a direct access to the wine cellar. From the kitchen there is an elevator going up to the by-kitchen and the main dining room.



There are many private sections for or family & friends and guests: a living room with music facilities and a cinema room connected with satellite services so you can watch any TV-station in the world.

Next to this living room there is a small dining room, which can also be used as a reception room.

Upstairs (South-East wing) you will find the library and the billiard room.



The castle contains a master bedroom and 15 guestrooms.

The master bedroom is equipped with an extra large bed with a built-in flat screen TV.

The bedroom has a working fireplace.

It has its own bathroom with a Jacuzzi and a sauna.

Above this room there is a private dining room with a kitchenette giving access to a terrace on the roof of the castle.



All rooms were restored in the late 1990's, based on careful studies of the period when the castle was built.

With the intention of private use, they are meeting today's needs, like under-floor heating, hot water, well streaming showers, and electricity.

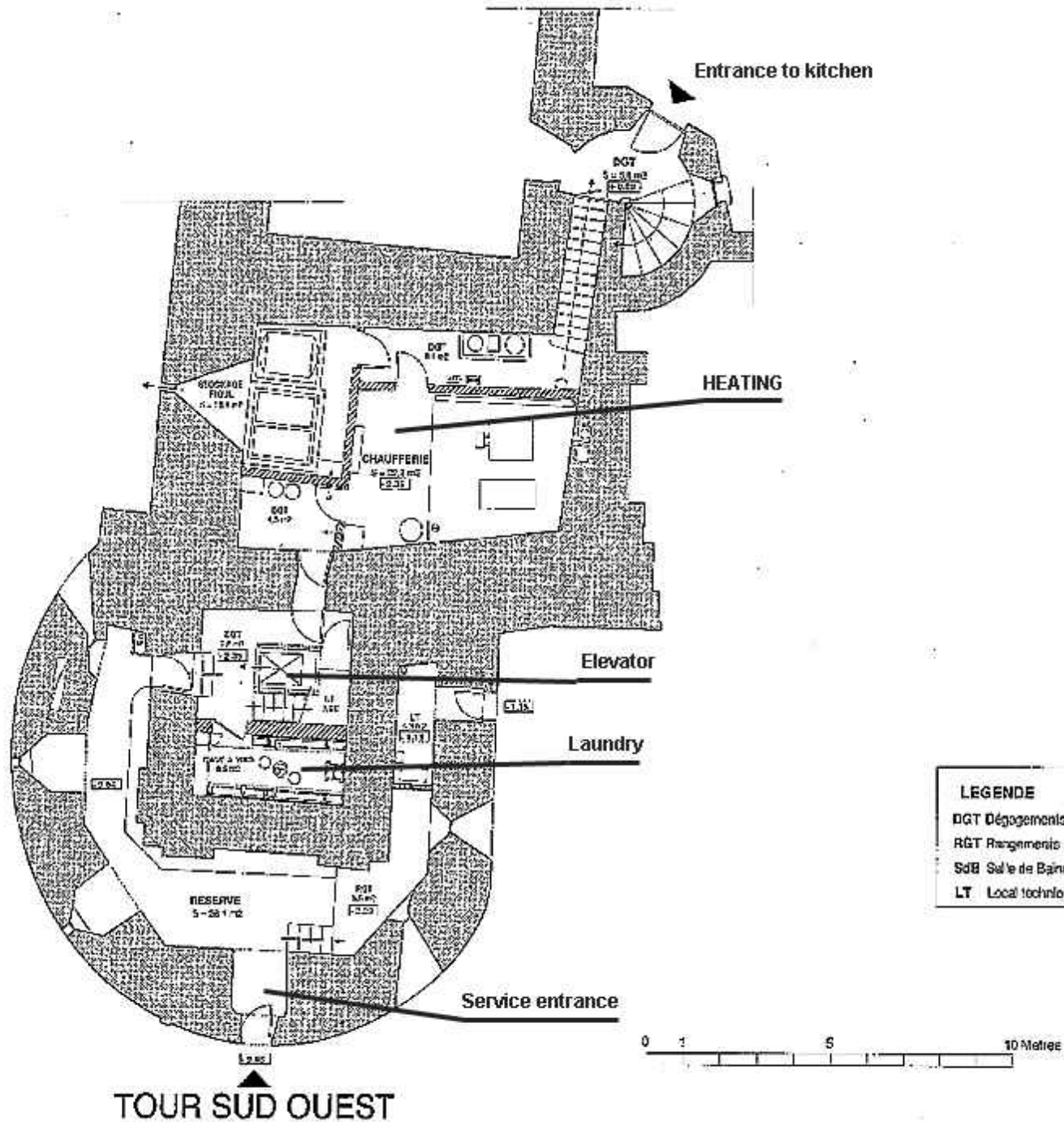


The tavern is in full function and serves tourists as well as the local population in the surrounding for drinks and meals. It has a pub-like bar and a capacity for more than 100 people inside for dinner or lunch. Outside there are two terraces with a capacity for over 200 persons.

It has a parking area and a large barn for multifunctional use.







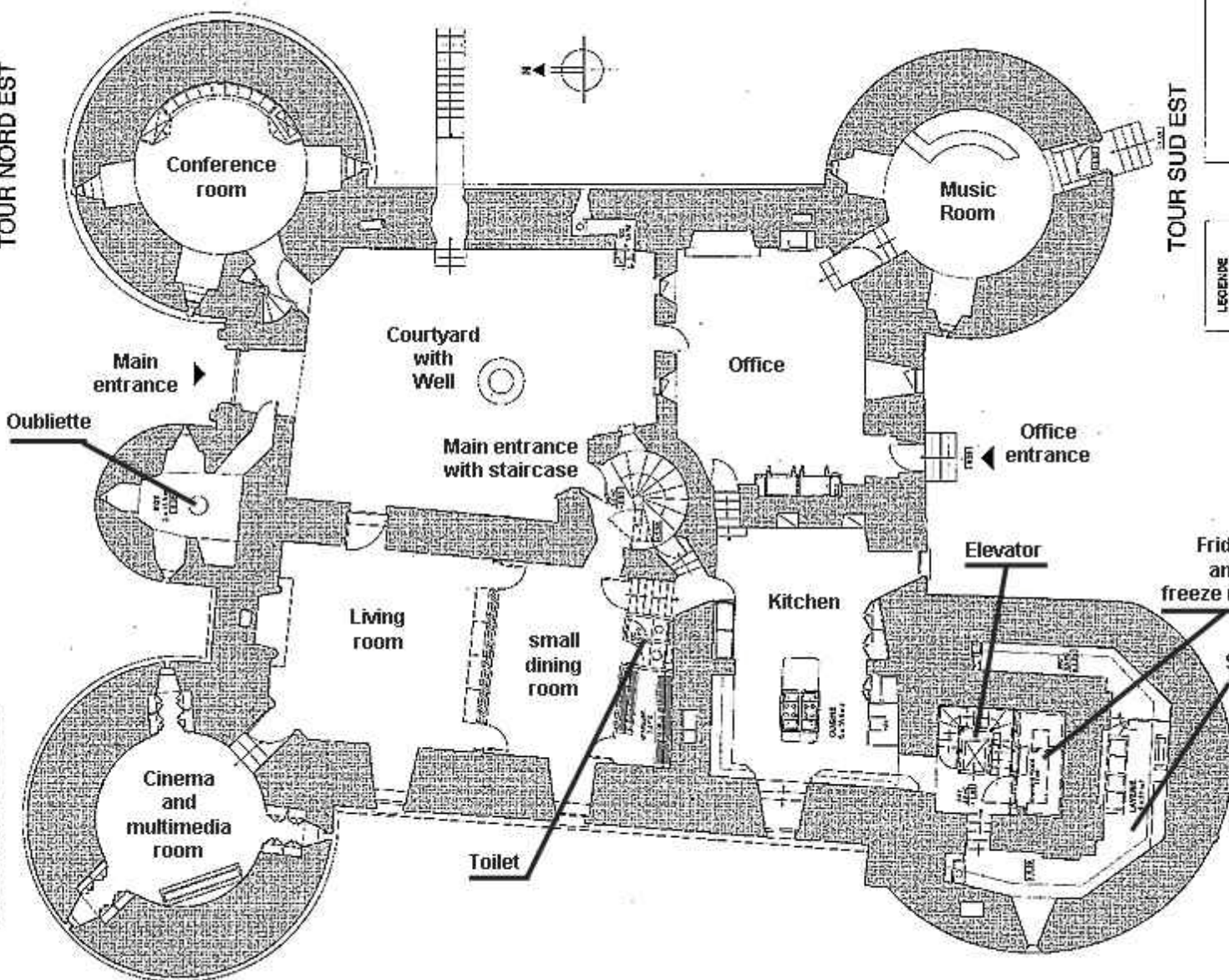
CHATEAU DE MONTBRUN	
AMENAGEMENT INTERIEUR	
PARTIE 2	
TOUR SUD OUEST	
Maitre d'Ouvrage	
Société CHATEAU DE MONTBRUN	
Maitre d'oeuvre	
J. L. B. Architecte DPLG - 02 03 00 12 00 00	
SOUS SOL	
04/2000	ECH : 1/100
01	
E. X. E.	
PROJET	

TOUR NORD OUEST

TOUR NORD EST

TOUR SUD OUEST

TOUR SUD EST



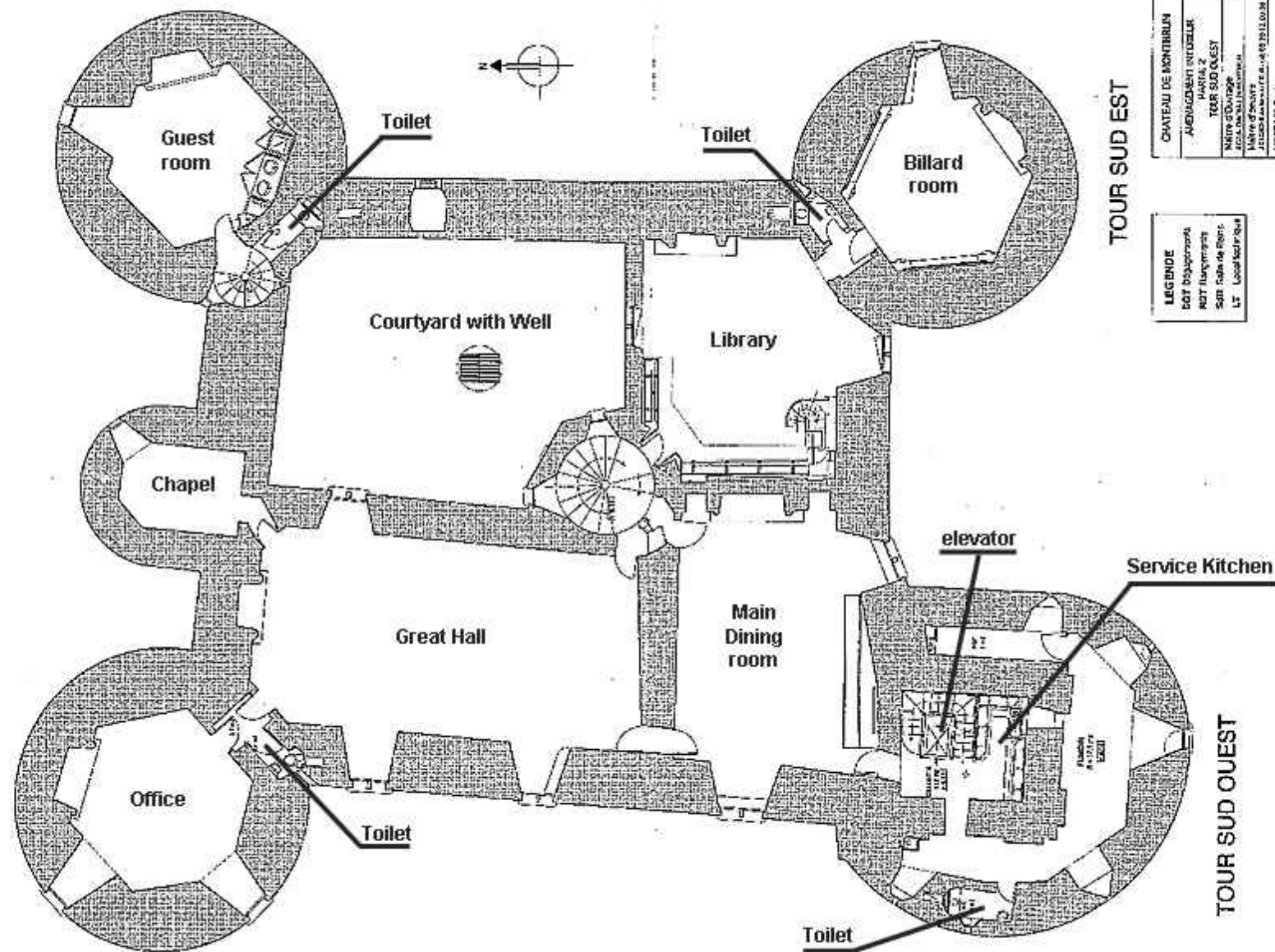
LEGENDE
 BOIT D'égouttoirs
 RIGT Rayonnements
 Balli Salle de Bain
 LT Local technique

AM/AGENCE INTERIEUR	02
PARTIE 2	E. X. E.
TOUR SUD OUEST	PROJET
Niveau d'usage	
Niveau d'œuvre	
Niveau d'exécution	
NIVEAU RDC	
Scale	1/100

0 1 2 3 4 5 6 7 8 9 10 mètres

TOUR NORD OUEST

TOUR NORD EST

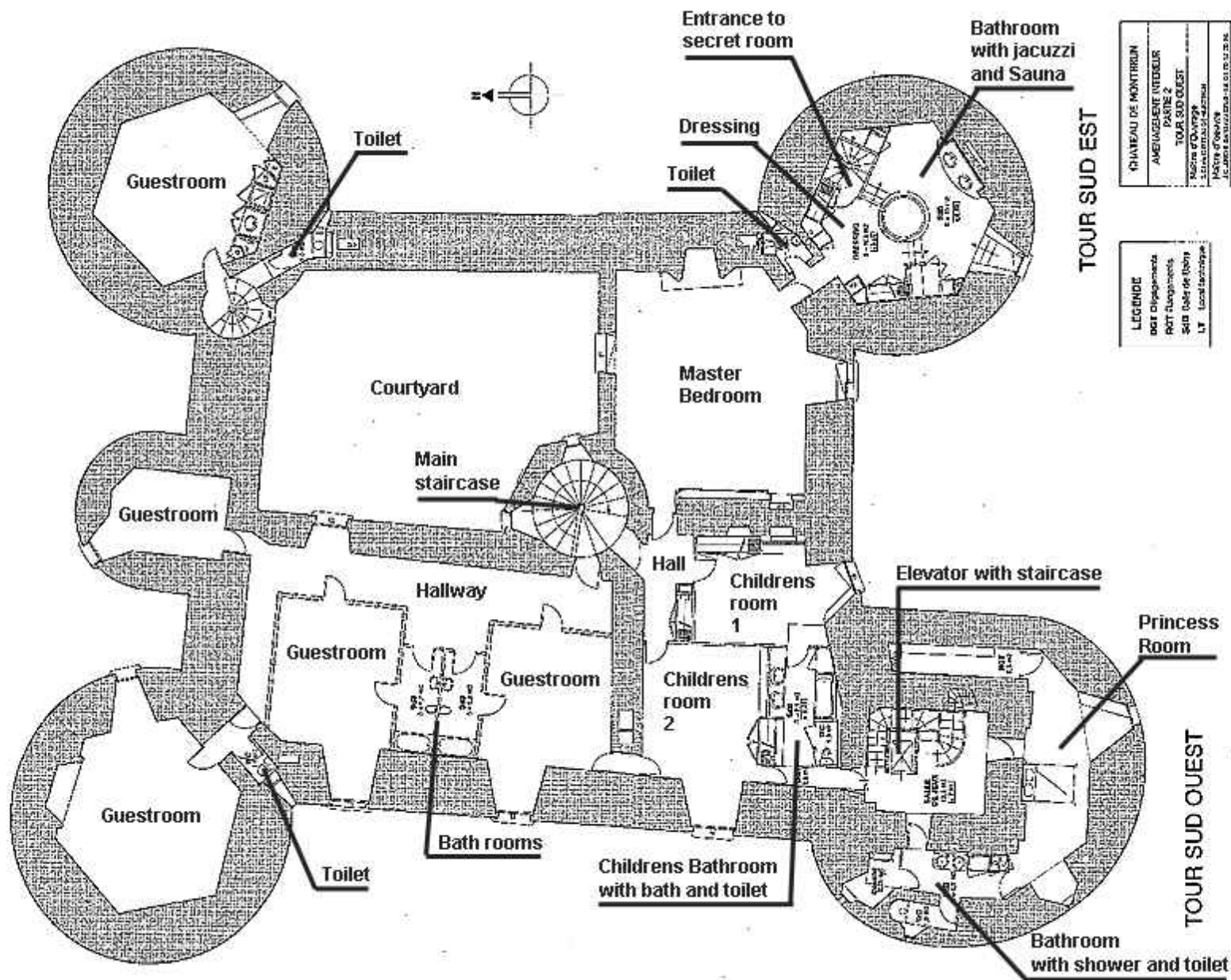


LEGENDE
 EGT Bâtiements
 NOT Itinéraires
 SGN Sols de Répis
 LT Local technique

CHATEAU DE MONTBERLU
AMÉNAGEMENT INTERIEUR
MARIA, 2
TOUR SUD OUEST
MAÎTRE D'OUVRAGE
ARCHITECTE
MAÎTRE D'ŒUVRE
PROJETANT
DATE
ÉCHELLE
03
E. X. E.
PROJET

0 1 2 3 4 5 6 7 8 9 10 Mètres

TOUR NORD EST



LEGENDE

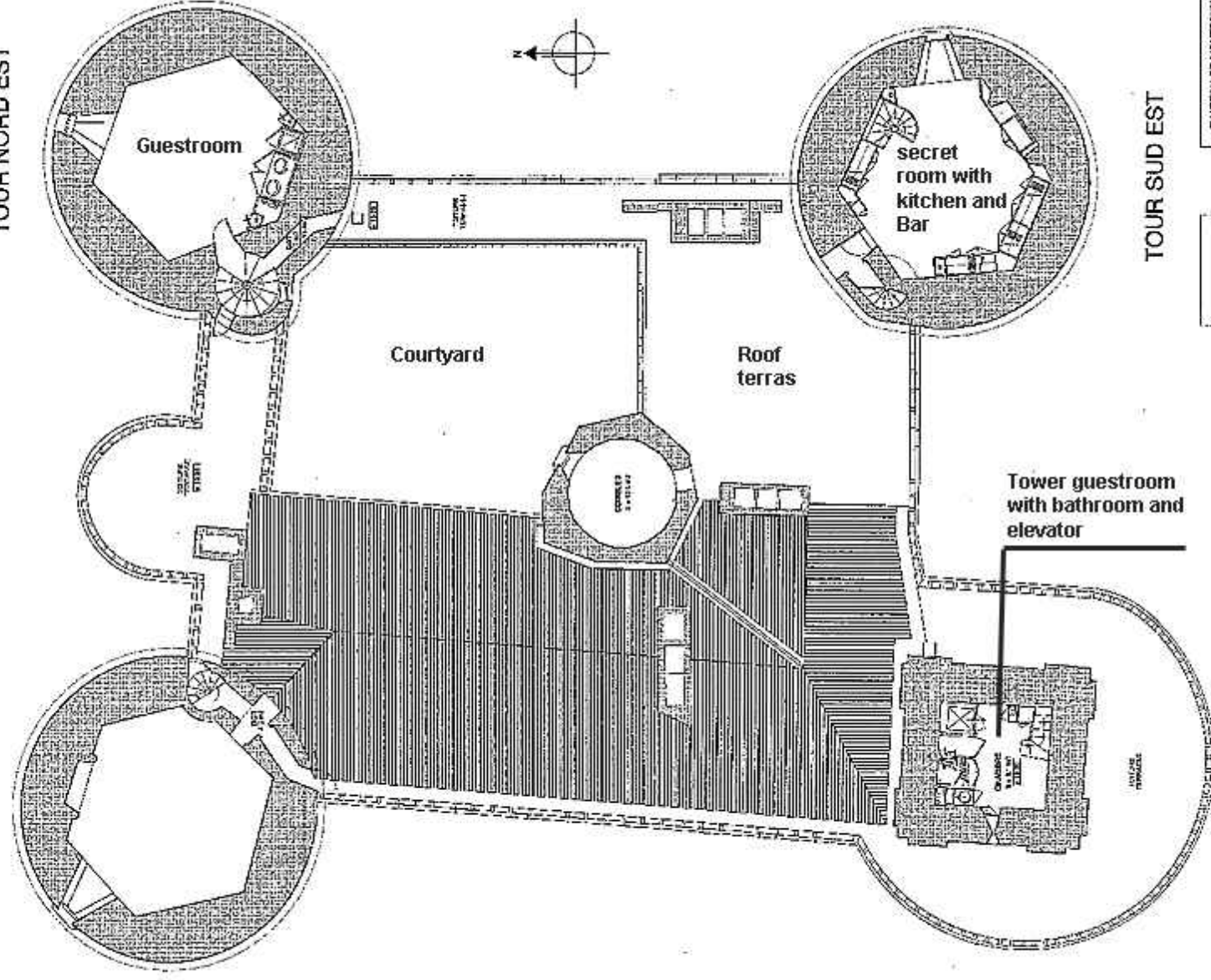
DOF Obligations
POT Obligations
Sole Sales de l'Etat
L.V. localisation

CHATEAU DE MONTBRUN AMENAGEMENT INTERIEUR PARTIE 2 TOUR SUD-OUEST MAISON D'ORANGERIE 21/01/2010 11:47:37 AM MAISON D'ORANGERIE 21/01/2010 11:47:37 AM NIVEAU RH-2	04/00000 ECH: 1/100	04	E X E	PROJET
---	---------------------	----	-------	--------

Plant	Number of leaves
Plant A	2
Plant B	3
Plant C	4
Plant D	5
Plant E	6

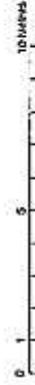
TOUR NORD OUEST

TOUR NORD EST



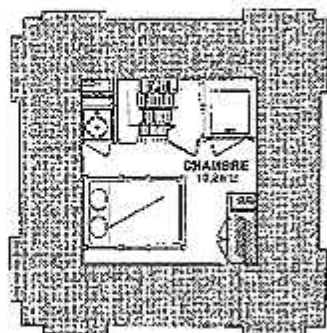
LEGENDE
 001 D'agencement
 002 Planchement
 003 Sûreté de la vie
 004 Locales techniques

CHATEAU DE MONTRESAU
AMENAGEMENT INTERIEUR
PARTIE 2
TOUR SUD OUEST
Figure d'ensemble
Maître d'œuvre
Architecte
NIVEAU R+3 TOITURES
Scale 1:1000
05
E. X. E.
PROJET

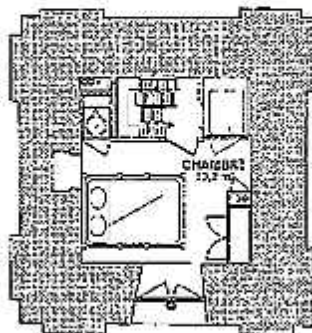


TOUR SUD OUEST

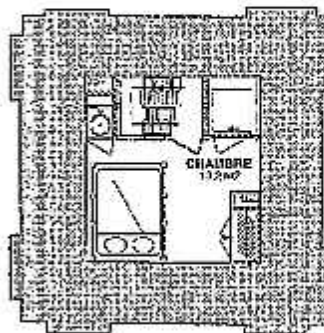
Tower guestroom
with bathroom and
elevator



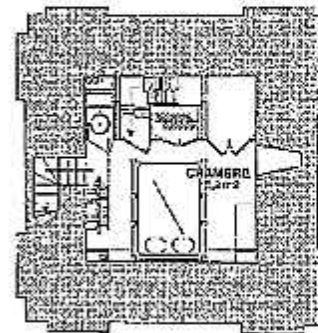
Tower guestroom
with bathroom and
elevator



Tower guestroom
with bathroom and
elevator



Tower guestroom
with bathroom and
elevator



NIVEAU R+4

5.35.00

NIVEAU R+5

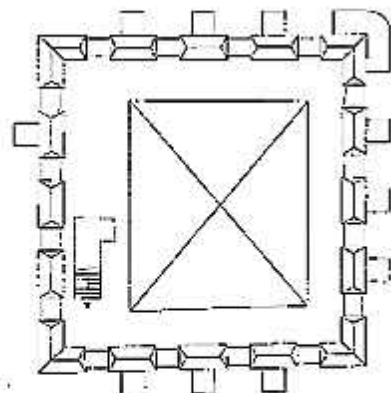
5.35.00

NIVEAU R+6

5.35.00

NIVEAU R+7

5.35.00



TOITURE

5.35.00

LEGENDE

- DGT Dégagements
- RGT Rangements
- SdB Salle de Bains
- LT Local technique

0 1 5 10 Metres

CHATEAU DE MONTEBRUN

AMENAGEMENT INTERIEUR
PARTIE 2
TOUR SUD OUEST

Maitre d'Ouvrage
S.C. CHATEAU DE MONTEBRUN

Maitre d'oeuvre
JELIMON Architectes DPLG - tel: 03 20 42 05 34

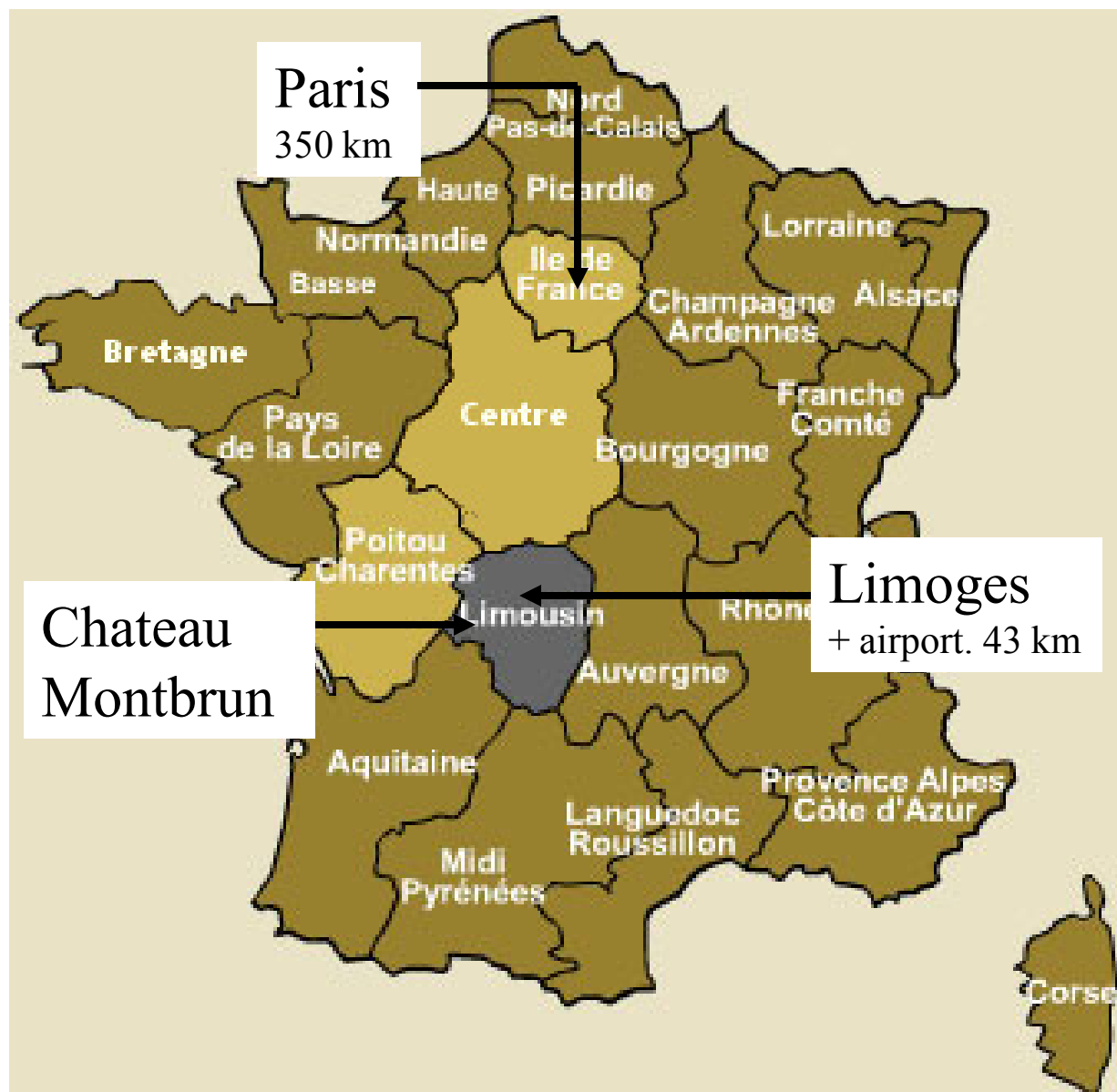
NIVEAUX R+4, R+5, R+6, R+7

04/2000 ECH : 1/100

06

E. X. E

PROJET



Contact: info@castle-forsale.com
www.castle-forsale.com